



LiveTally BOX



USER'S MANUAL



CONTENTS

Introduction.....	2
Presentation.....	2
In the box.....	2
Installation	3
Installing the software	3
Setting the ID switch	5
Meaning of the LEDs	5
Warranty.....	6
Technical data.....	7
Mechanical data.....	7
Electrical data	8
Pin connectors	9



INTRODUCTION

PRESENTATION:

The LiveTally Box allows Tally information to be fed from any Live Tricaster HD production system in GPI dry contacts. The LiveTally Box is connected to the Tricaster via USB. It can manage up to 16 sources and feed the corresponding tally lights via the 2 Sub-D25 PREVIEW and PROGRAM connectors provided for this purpose.

IN THE BOX:

1x LiveTally Box

1x USB cable for connecting the Tricaster

1x USB flash drive with the driver for TriCaster

If any of these items are missing, please contact your retailer.

INSTALLATION

INSTALLING THE SOFTWARE

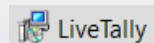
Connect the LiveTally Box to any of the Tricaster's USB ports using the USB cable provided.

Download the LiveTally Box software driver from the following link:

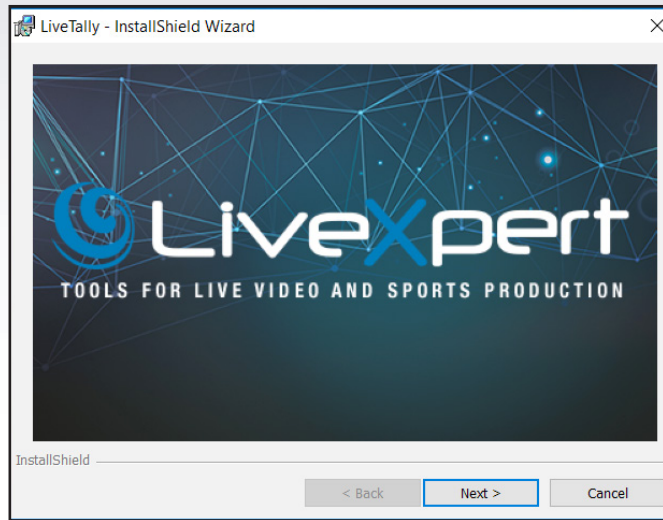
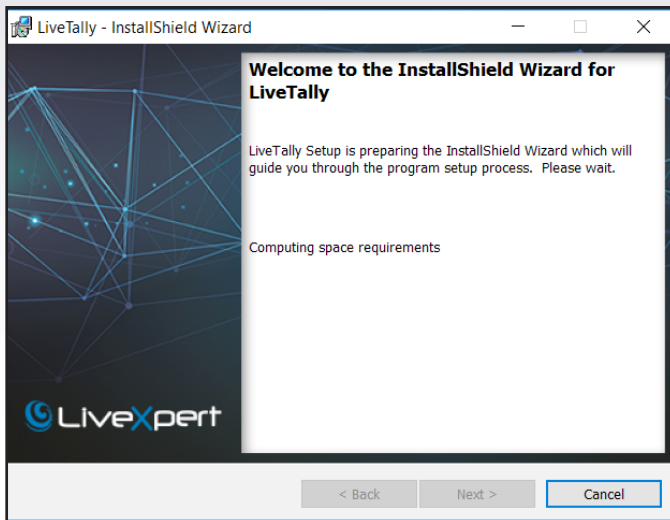
<https://www.3dstorm.com/en/support2/download>

Copy the software to the hard disk of your Tricaster.

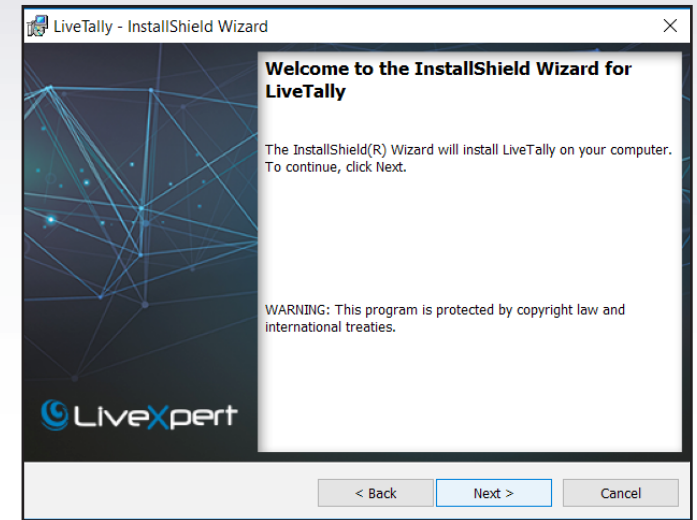
Start the installation by double-clicking on the file name.



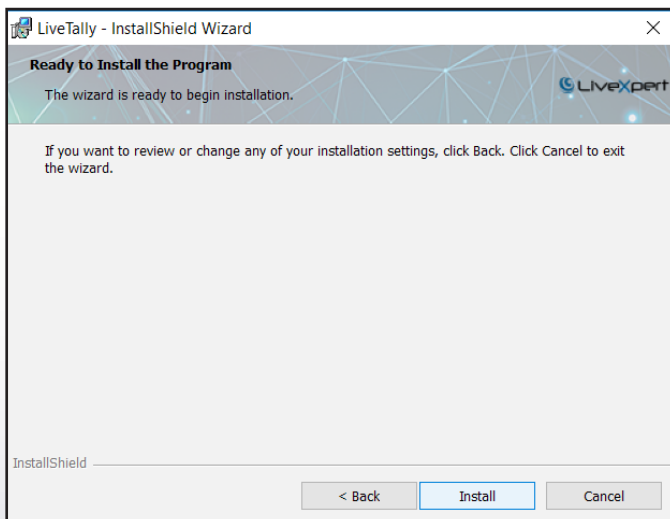
Follow the instructions.



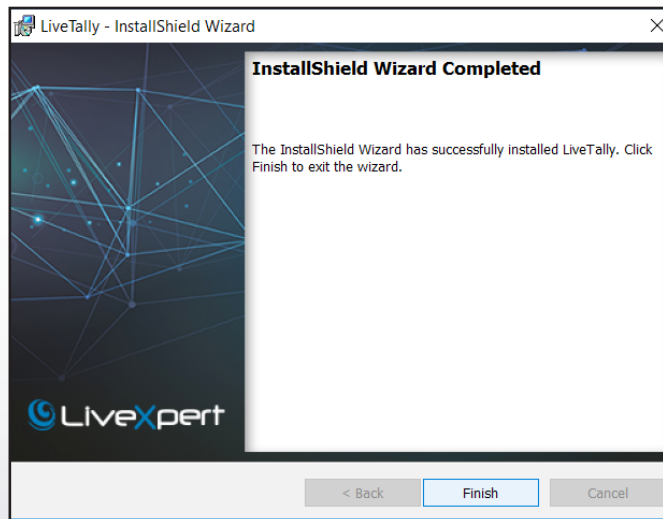
Click Next



Click Next



Click Install to start the installation



Click Finish to finish the installation

After installation, the software will start automatically each time the Tricaster is switched on. There will be no settings to adjust or parameters to change. The LiveTally Box will connect automatically.

SETTING THE LIVETALLY BOX ID

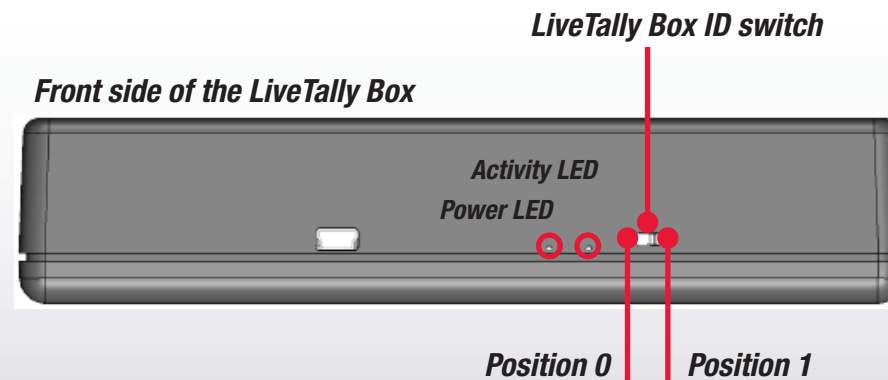
When used with Video Mix Engine, two LiveTally Boxes can be combined to provide Tally information from up to 32 sources.

LiveTally Box number 1 will be connected to any USB port on the Video Mix Engine and its ID will be set to position 0.

LiveTally Box number 1 will manage Tally information from sources 1 to 16.

LiveTally Box number 2 will be connected to any USB port on the Video Mix Engine and its ID will be set to position 1.

LiveTally Box number 2 will manage Tally information from sources 17 to 32.



MEANING OF THE LIVETALLY BOX'S LEDs

The LiveTally BOX is powered by the USB port, and it has 2 LEDs:

Power LED – Red: Steady light when the box is powered on.

Activity LED – Green: Flashes each time the status of the Program or Preview bus changes.

WARRANTY

LiveTally Box products are covered by a 12-month warranty covering parts and labour, in the event of failure during normal use of the product or a manufacturing defect.

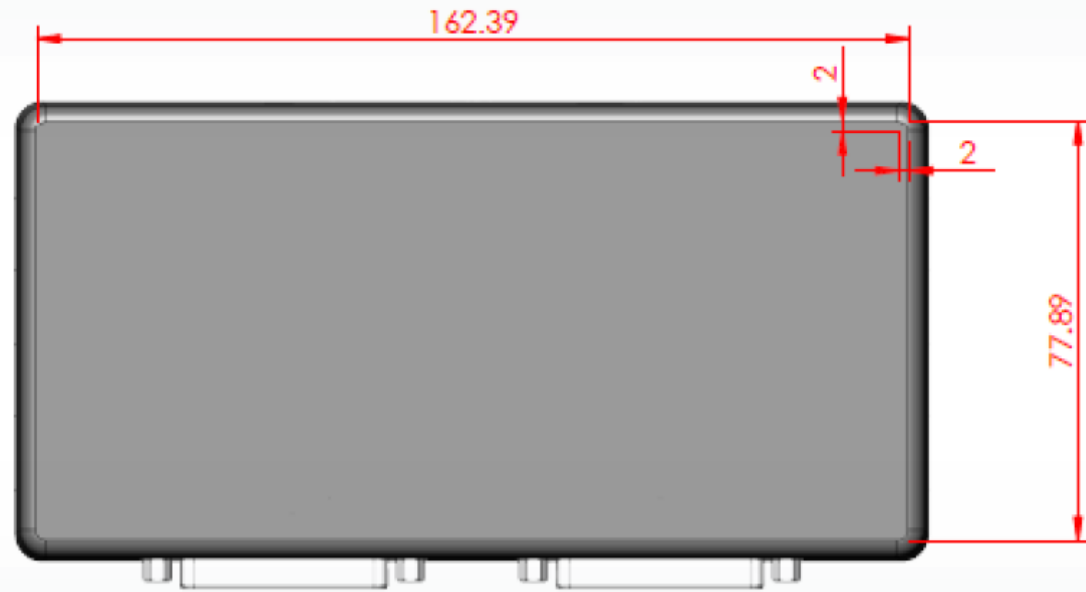
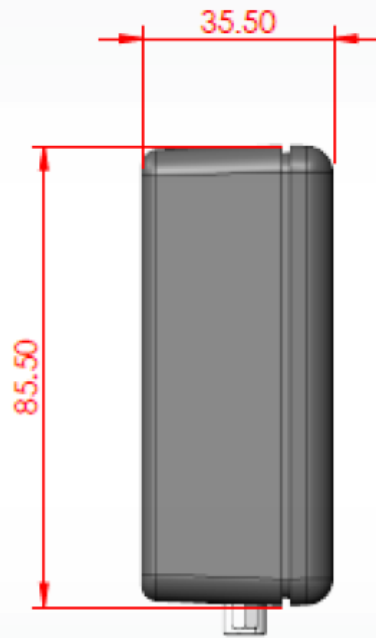
To exercise the warranty, the product must be returned to 3D Storm. Shipping costs, if any, must be paid by the owner of the product. The product will be returned once the repair is completed, with return shipping costs covered by 3D Storm. Any repairs performed without the consent of 3D Storm will void the warranty.

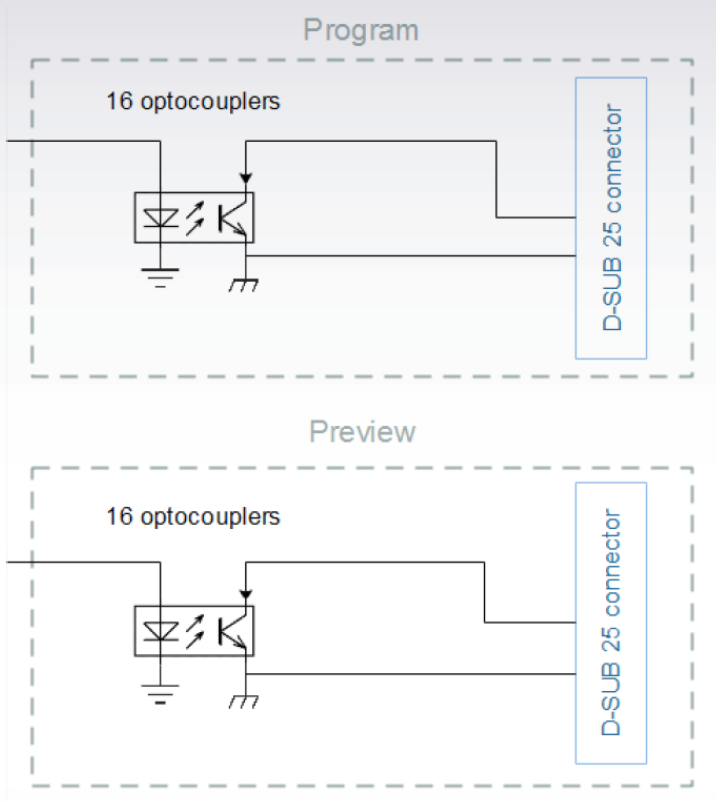
If you have any questions, please contact us on **+33 (0)5 57 262 262**
or send us an email to **cs@3dstorm.com**

TECHNICAL DATA

MECHANICAL DATA:

The dimensions of the LiveTally BOX are shown in the figure below. All measurements are expressed in [mm].





ELECTRICAL DATA:

The LiveTally BOX is powered by +5V directly via the USB connection. No additional power supply is required.

The LiveTally BOX delivers both Preview and Program information in the form of dry contacts on the respective connectors marked Preview and Program. The simplified diagram is shown opposite.

From an electrical standpoint, the following values characterise the inputs of the Preview and Program connectors:

Parameter	Value
Max Voltage	60 [V]
Max Current	100 [mA]
Max Resistance (Active)	16 [Ω]

PIN CONNECTORS:

The LiveTally BOX has 3 main connectors:

USB connector

USB connector pin	Signal Name
1	5V
2	D-
3	D+
4	ID
5	GND

SUB-D25 Connector – Program

Program d-SUB pin	Signal Name
1	PROG_1
2	PROG_2
3	PROG_3
4	PROG_4
5	PROG_5
6	PROG_6
7	PROG_7
8	PROG_8
9	PROG_9
10	PROG_10
11	PROG_11
12	PROG_12
13	PROG_13
14	PROG_14
15	PROG_15
16	PROG_16
17	PROG_GND
18	PROG_GND
19	PROG_GND
20	PROG_GND
21	PROG_GND
22	PROG_GND
23	PROG_GND
24	PROG_GND
25	PROG_GND

SUB-D25 Connector – Preview

Program d-SUB pin	Signal Name
1	PREV_1
2	PREV_2
3	PREV_3
4	PREV_4
5	PREV_5
6	PREV_6
7	PREV_7
8	PREV_8
9	PREV_9
10	PREV_10
11	PREV_11
12	PREV_12
13	PREV_13
14	PREV_14
15	PREV_15
16	PREV_16
17	PREV_GND
18	PREV_GND
19	PREV_GND
20	PREV_GND
21	PREV_GND
22	PREV_GND
23	PREV_GND
24	PREV_GND
25	PREV_GND



3D Storm is the distributor of NewTek and LiveXpert products - 70, Avenue de Capeyron - 33160 Saint-Medard-en-Jalles, France
T: + 33 (0) 5 57 262 262 - F: + 33 (0) 5 57 262 261 - info@3dstorm.com